

K2-5000 RtR SPECIFICATIONS



Model		K2-5000 RtR
Printhead		Kyocera
Quantity of printheads		4-12 (dual row)
Max Print speed (ft²/h)	2 Pass	3000
	6 Pass	1500
	9 Pass	1100
	12 Pass	724
Resolution		1200 x 1200 dpi
Max width		5.0 m
Max media thickness		2mm
Media type		Roll materials
Ink		Flexible UV ink
Ink color		CMYK (white is optional)
Machine size (L x W x H)		350" x 80" x 80"
Machine net weight		13,889 lbs
Shipping weight		18,011 lbs
Power supply		220 - 230 VAC. 60Hz 30 AMP (single phase)
RIP support		Onyx or Caldera
UV Curing		LED
Environment		Separated workroom in good cleaning and ventilated condition, avoid direct sunlight Temperature: 64°F - 86°F (18° C – 30° C) Constant Humidity: 45%-70%



K2-5000 Roll to Roll

Most economical, high quality 5m printer in the market with superior print production.

- The K2-Series achieves both quality and speed with the revolutionary Kyocera printhead on media up to 2mm thick.
- Each of the 2,656 nozzles per the 4.25" wide printhead ejects 40,000 drops per second- that's over 100 million drops a minute per printhead!
- Kyocera's unique printhead technology enables outstanding image quality by controlling the variable drop size.
- The unique ink-channel design provides a stable ink supply to all the nozzles for high-speed continuous printing.

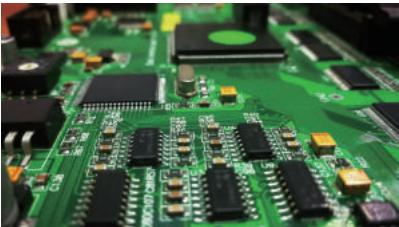


CET Color. Inc.
Address: 4450 Commerce Dr. SW, Atlanta, GA 30336
Main: 404-228-1259 Support: 404-505-1890
E-mail: info@cetcolor.com.
www.cetcolor.com

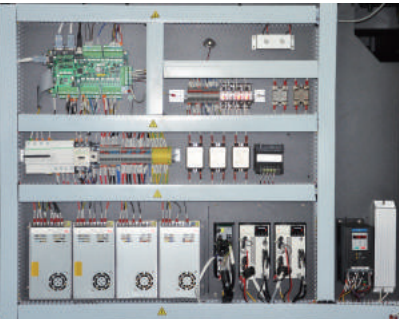


- 9 Multiple air cylinder supported pinch rollers
Pinch roller with 8 air cylinder supporter which allow divided adjustment to ensure media transportation.
- 10 Water-cooling printing platform with adjustable suction zone
Special design for heat-sensitive media, avoid distortion from high temperature during printing.
- 11 Auto height detection system, range of 0-30mm
Automatically detects the height of media up to 30mm thickness and calibrates printhead distance for variable dot placement.
- 12 Water-cooling LED lamp
Good curing performance with lower operating temperature and environment-friendly water-cooling LED system.
- 13 Top printing speed: up to 2067 ft²/hr
Being engineered for high-quality printing and outputs up to 2067ft²/hr with full blood capacity.
- 14 Media tension adjustment control
Media adjustment to assure proper tension of media while printing.
- 15 Automatic solenoid valve control of ink system
The ink valve system is opened and closed automatically by solenoid valve control.

- 1 Auto media width detection system
Automatically detects the width of media, capable of printing different sizes of media.
- 2 Static suppression
Static suppression kit that eliminates static on the substrate.
- 3 Automatic negative pressure system
Negative pressure is controlled through control software.
- 4 Linear motor and metal raster
High-tech linear motor drive produces stable carriage movement, magnetic raster ensures high precision ink drop placement.
- 5 Kyocera print heads
Variable dots, true grey-scale imaging 4, 6 and 10pl.
- 6 On board control module
Independent control module with rich functions that are user friendly and efficient.
- 7 Function for mesh printing
Special design with mesh kit, optional for the customers to print mesh material.
- 8 Double rollers feeding system
Efficient and convenient system for loading the media.



Self-developed, customized driver and PCB board



Conveniently designed industrialized wiring

Kyocera KJ4A Printhead

Nozzle quantity : 2656
Pico-litter : Variable 4-6-10pl
Max Operating Frequency : 30Khz
Effective Print Width : 112.35mm

